



Barnabas Apartments, Woodside Park, N12 7AW
Per Month £2,650 Per Month Council Tax Band E

REAL ESTATES
Est.1981

Estate Agents · Residential Sales · Investments · Lettings

AVAILABLE NOW

A 2 BEDROOM 2 BATHROOM 1ST FLOOR APARTMENT in this converted church, offering fantastic character features and the benefit of an UNDERGROUND PARKING SPACE.

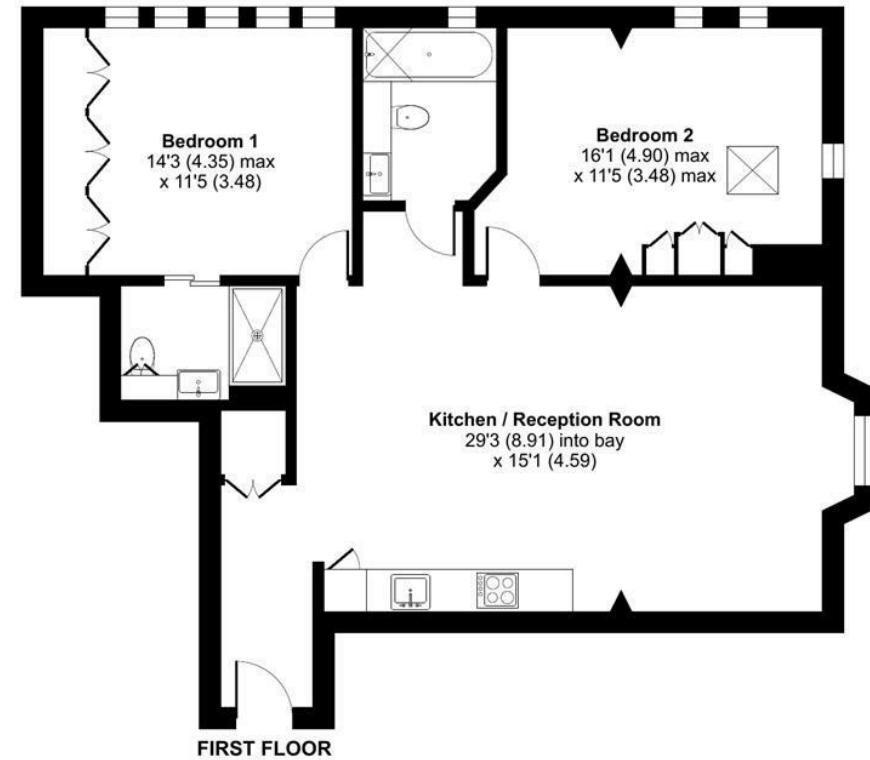
Situated within a stone's throw to Woodside Park NORTHERN LINE tube station, bus routes and green walks as well as being within walking distance of local coffee shops and convenience store.

MODERN FITTED KITCHEN, BATHROOM & SHOWER ROOM *FULLY FURNISHED*

Holden Road, London, N12

Approximate Area = 895 sq ft / 83.1 sq m

For identification only - Not to scale



Energy Efficiency Rating		
	Current	Potential
Very energy efficient - lower running costs		
92-100	A	
81-91	B	
69-80	C	
55-68	D	
39-54	E	
21-38	F	
1-20	G	
Not energy efficient - higher running costs		
England & Wales		EU Directive 2002/91/EC

Floor plan produced in accordance with RICS Property Measurement 2nd Edition, Incorporating International Property Measurement Standards (IPMS2 Residential). © ncthem 2026. Produced for Real Estates. REF: 1458720

Real Estates Woodside Park Office:
14/14a Sussex Ring
Woodside Park N12 7HX

ll : 020 8445 6387
e : info@realestates-wsp.co.uk
w : www.realestates-wsp.co.uk